



**Advanced Power
Electronics Corp.**

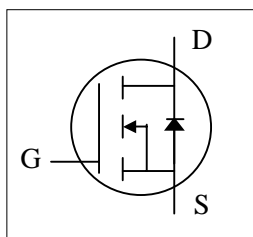
AP2764I-A

RoHS-compliant Product

N-CHANNEL ENHANCEMENT MODE

POWER MOSFET

- ▼ **100% Avalanche Test**
- ▼ **Fast Switching Characteristic**
- ▼ **Simple Drive Requirement**

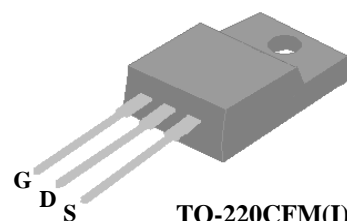


BV_{DSS}	680V
$R_{DS(ON)}$	$1.1\ \Omega$
I_D	9A

Description

AP2764 series are specially designed as main switching devices for universal 90~265VAC off-line AC/DC converter applications.

TO-220CFM type provide high blocking voltage to overcome voltage surge and sag in the toughest power system with the best combination of fast switching, ruggedized design and cost-effectiveness.



TO-220CFM(I)

Absolute Maximum Ratings

Symbol	Parameter	Rating	Units
V_{DS}	Drain-Source Voltage	680	V
V_{GS}	Gate-Source Voltage	± 30	V
$I_D @ T_C = 25^\circ\text{C}$	Continuous Drain Current, $V_{GS} @ 10\text{V}$	9	A
$I_D @ T_C = 100^\circ\text{C}$	Continuous Drain Current, $V_{GS} @ 10\text{V}$	6	A
I_{DM}	Pulsed Drain Current ¹	36	A
$P_D @ T_C = 25^\circ\text{C}$	Total Power Dissipation	37	W
E_{AS}	Single Pulse Avalanche Energy ²	40	mJ
I_{AR}	Avalanche Current	9	A
T_{STG}	Storage Temperature Range	-55 to 150	$^\circ\text{C}$
T_J	Operating Junction Temperature Range	-55 to 150	$^\circ\text{C}$

Thermal Data

Symbol	Parameter	Value	Units
R_{thj-c}	Maximum Thermal Resistance, Junction-case	3.4	$^\circ\text{C}/\text{W}$
R_{thj-a}	Maximum Thermal Resistance, Junction-ambient	65	$^\circ\text{C}/\text{W}$


Electrical Characteristics @ $T_j=25^{\circ}\text{C}$ (unless otherwise specified)

Symbol	Parameter	Test Conditions	Min.	Typ.	Max.	Units
BV_{DSS}	Drain-Source Breakdown Voltage	$V_{GS}=0V, I_D=1mA$	680	-	-	V
$R_{DS(ON)}$	Static Drain-Source On-Resistance ³	$V_{GS}=10V, I_D=4A$	-	-	1.1	Ω
$V_{GS(th)}$	Gate Threshold Voltage	$V_{DS}=V_{GS}, I_D=250\mu A$	2	-	4	V
g_{fs}	Forward Transconductance	$V_{DS}=10V, I_D=4A$	-	9	-	S
I_{DSS}	Drain-Source Leakage Current	$V_{DS}=480V, V_{GS}=0V$	-	-	25	μA
	Drain-Source Leakage Current ($T_j=150^{\circ}\text{C}$)	$V_{DS}=480V, V_{GS}=0V$	-	-	250	μA
I_{GSS}	Gate-Source Leakage	$V_{GS}=\pm 30V$	-	-	± 100	nA
Q_g	Total Gate Charge ³	$I_D=7A$ $V_{DS}=200V$ $V_{GS}=10V$	-	51	84	nC
Q_{gs}	Gate-Source Charge		-	11.5	-	nC
Q_{gd}	Gate-Drain ("Miller") Charge		-	11	-	nC
$t_{d(on)}$	Turn-on Delay Time ³	$V_{DD}=200V$ $I_D=7A$ $R_G=50\Omega, V_{GS}=10V$ $R_D=57\Omega$	-	38	-	ns
t_r	Rise Time		-	34	-	ns
$t_{d(off)}$	Turn-off Delay Time		-	338	-	ns
t_f	Fall Time		-	53	-	ns
C_{iss}	Input Capacitance	$V_{GS}=0V$	-	3120	5000	pF
C_{oss}	Output Capacitance	$V_{DS}=30V$	-	135	-	pF
C_{rss}	Reverse Transfer Capacitance	$f=1.0MHz$	-	15	-	pF

Source-Drain Diode

Symbol	Parameter	Test Conditions	Min.	Typ.	Max.	Units
V_{SD}	Forward On Voltage ³	$I_S=7A, V_{GS}=0V$	-	-	1.5	V
t_{rr}	Reverse Recovery Time ³	$I_S=7A, V_{GS}=0V,$	-	530	-	ns
Q_{rr}	Reverse Recovery Charge	$dI/dt=100A/\mu s$	-	8.7	-	μC

Notes:

1. Pulse width limited by max. junction temperature.
2. Starting $T_j=25^{\circ}\text{C}$, $V_{DD}=50V$, $L=1mH$, $R_G=25\Omega$
3. Pulse test

THIS PRODUCT IS SENSITIVE TO ELECTROSTATIC DISCHARGE, PLEASE HANDLE WITH CAUTION.

USE OF THIS PRODUCT AS A CRITICAL COMPONENT IN LIFE SUPPORT OR OTHER SIMILAR SYSTEMS IS NOT AUTHORIZED.

APEC DOES NOT ASSUME ANY LIABILITY ARISING OUT OF THE APPLICATION OR USE OF ANY PRODUCT OR CIRCUIT DESCRIBED HEREIN; NEITHER DOES IT CONVEY ANY LICENSE UNDER ITS PATENT RIGHTS, NOR THE RIGHTS OF OTHERS.

APEC RESERVES THE RIGHT TO MAKE CHANGES WITHOUT FURTHER NOTICE TO ANY PRODUCTS HEREIN TO IMPROVE RELIABILITY, FUNCTION OR DESIGN.

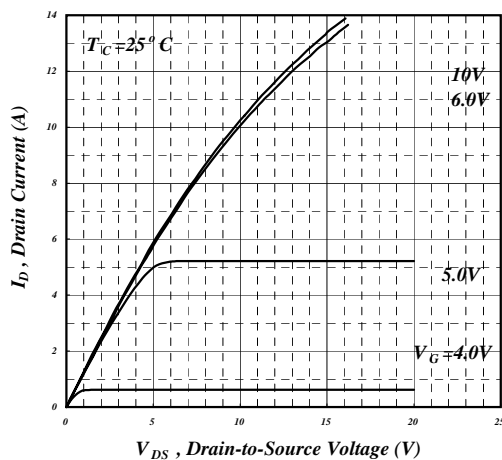


Fig 1. Typical Output Characteristics

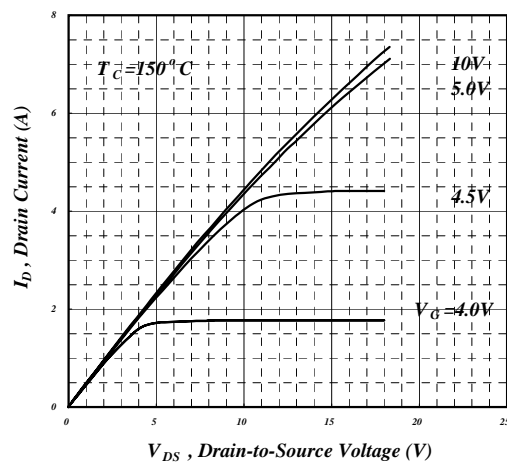


Fig 2. Typical Output Characteristics

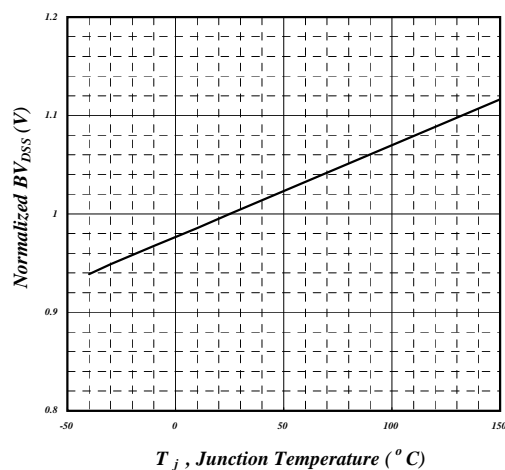


Fig 3. Normalized BV_{DSS} v.s. Junction Temperature

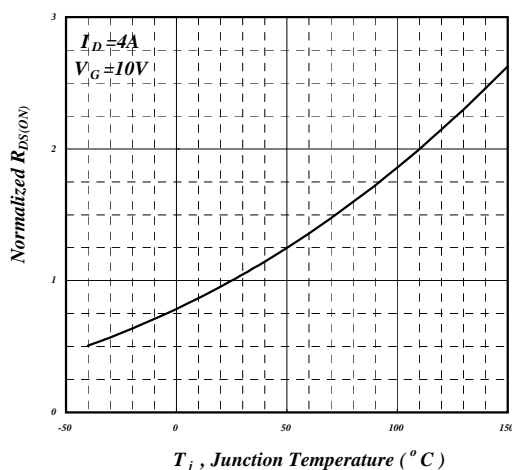


Fig 4. Normalized On-Resistance v.s. Junction Temperature

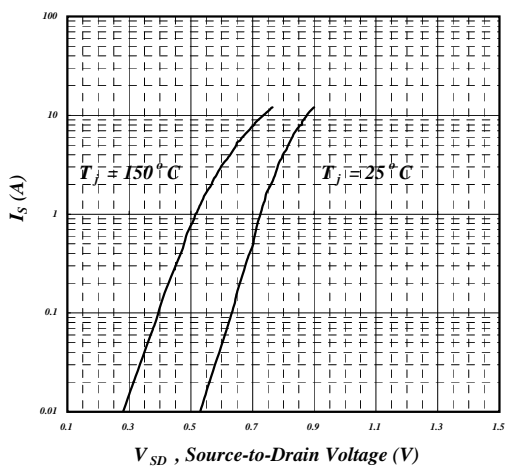


Fig 5. Forward Characteristic of Reverse Diode

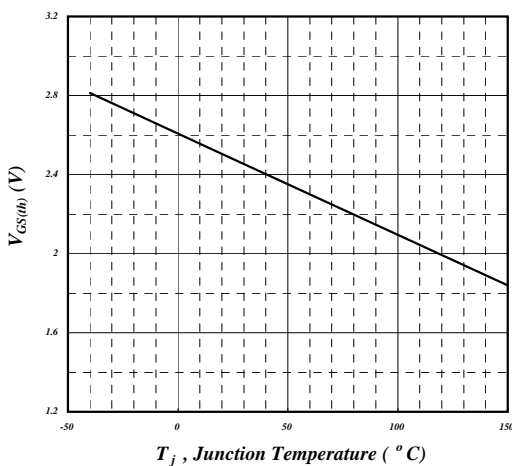


Fig 6. Gate Threshold Voltage v.s. Junction Temperature

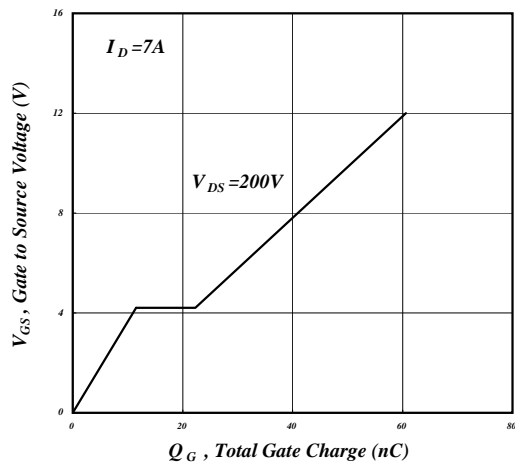


Fig 7. Gate Charge Characteristics

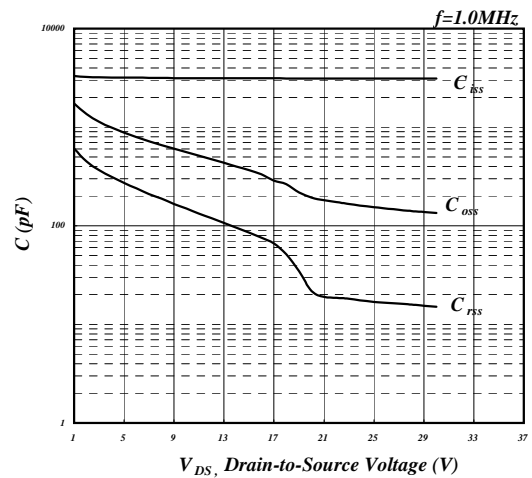


Fig 8. Typical Capacitance Characteristics

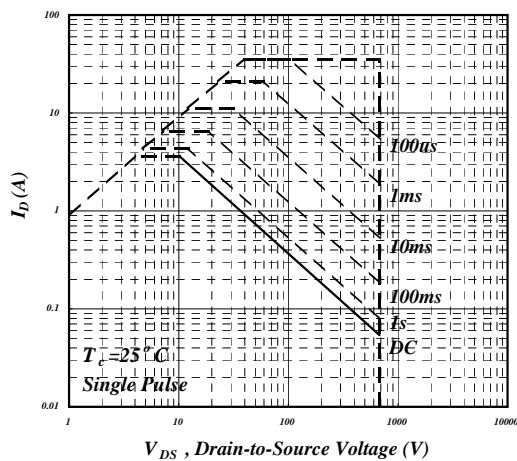


Fig 9. Maximum Safe Operating Area

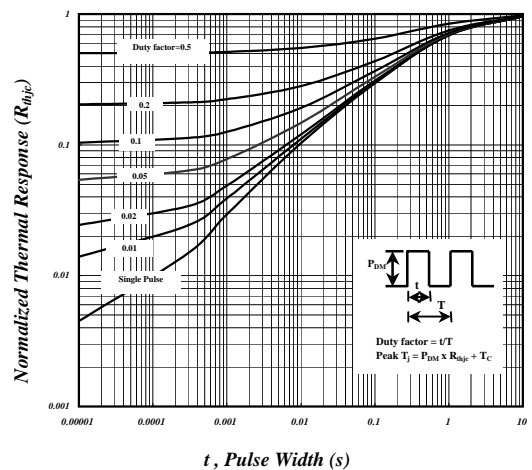


Fig 10. Effective Transient Thermal Impedance

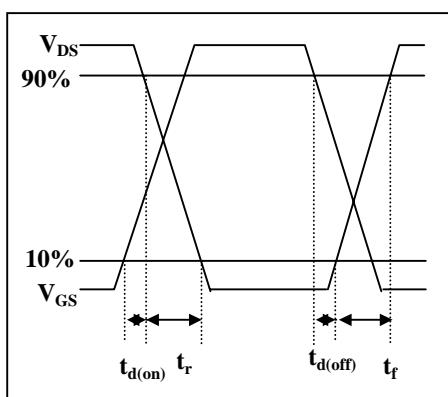


Fig 11. Switching Time Waveform

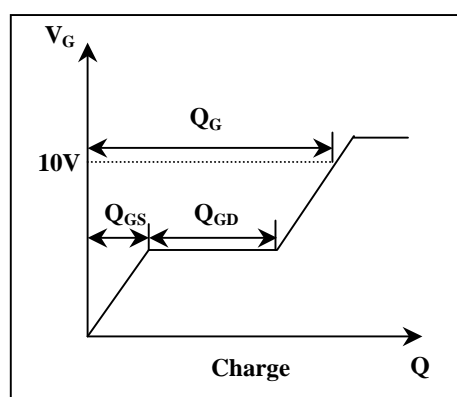
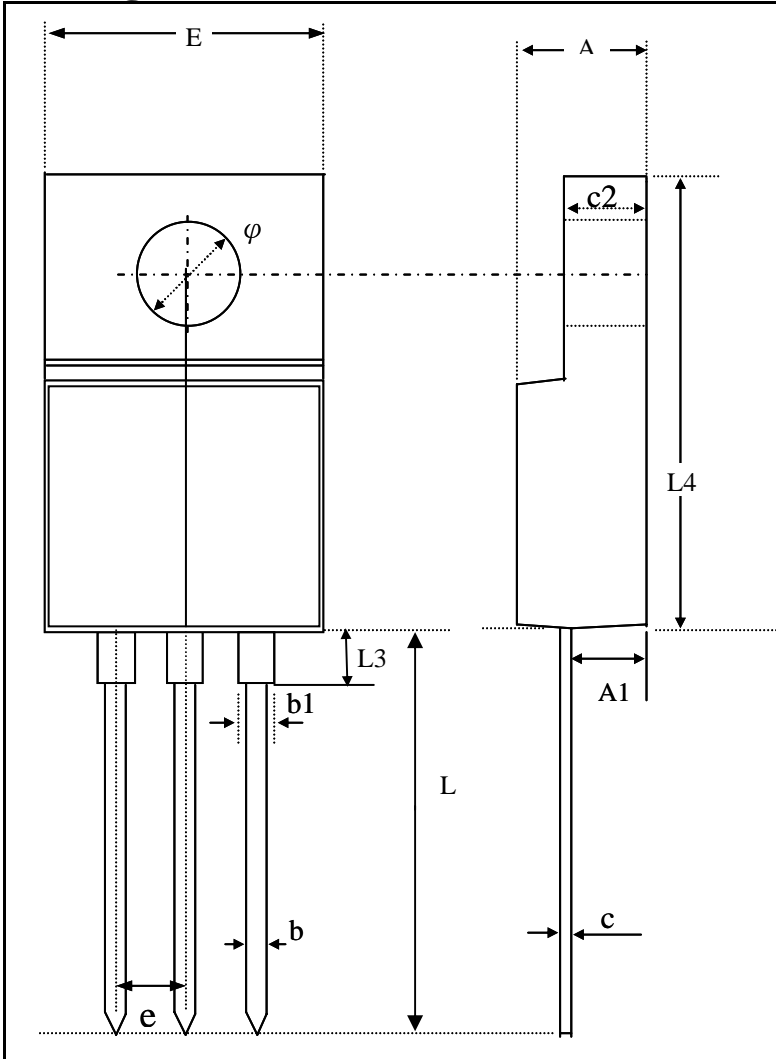


Fig 12. Gate Charge Waveform



ADVANCED POWER ELECTRONICS CORP.

Package Outline : TO-220CFM



SYMBOLS	Millimeters		
	MIN	NOM	MAX
A	4.30	4.70	4.90
A1	2.30	2.65	3.00
b	0.50	0.70	0.90
b1	0.95	1.20	1.50
c	0.45	0.65	0.80
c2	2.30	2.60	2.90
E	9.70	10.00	10.40
L	12.50	13.00	13.50
L3	2.91	3.41	3.91
L4	14.70	15.40	16.10
ϕ	----	3.20	----
e	----	2.54	----

1.All Dimensions Are in Millimeters.

2.Dimension Does Not Include Mold Protrusions.

Part Marking Information & Packing : TO-220CFM

