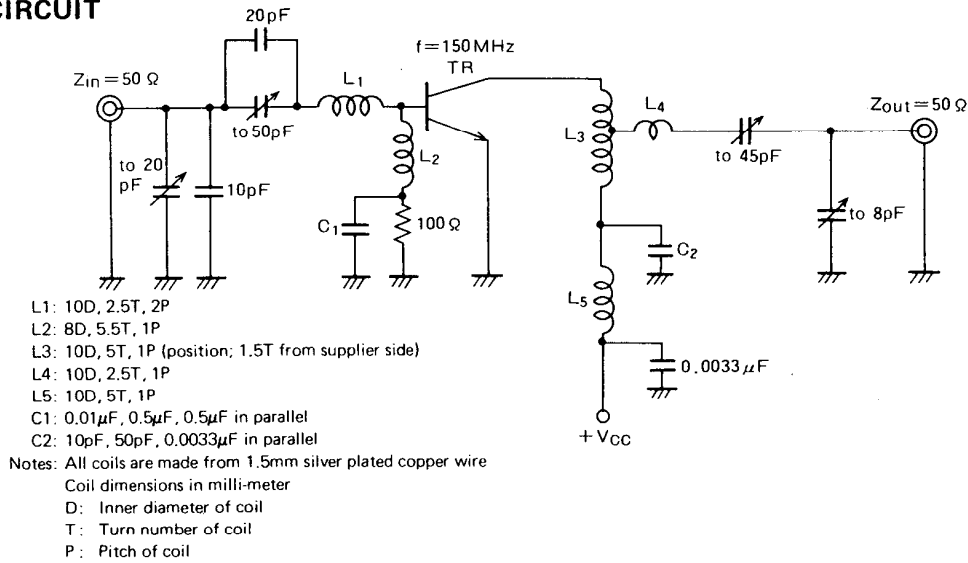
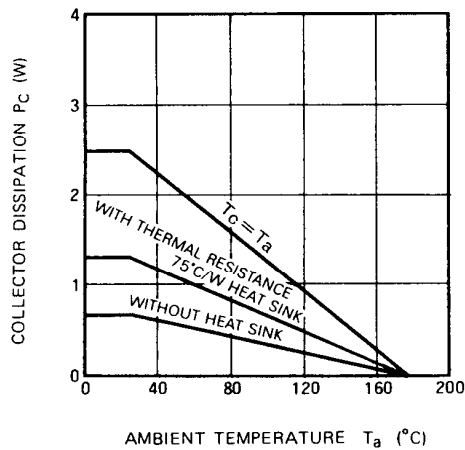


TEST CIRCUIT

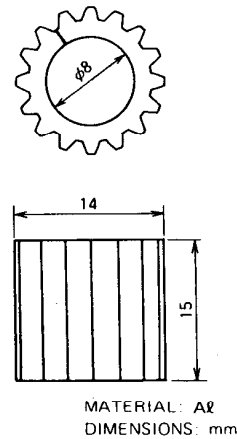


TYPICAL PERFORMANCE DATA

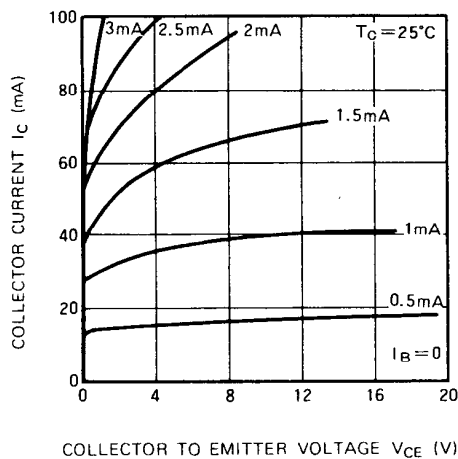
COLLECTOR DISSIPATION VS. AMBIENT TEMPERATURE



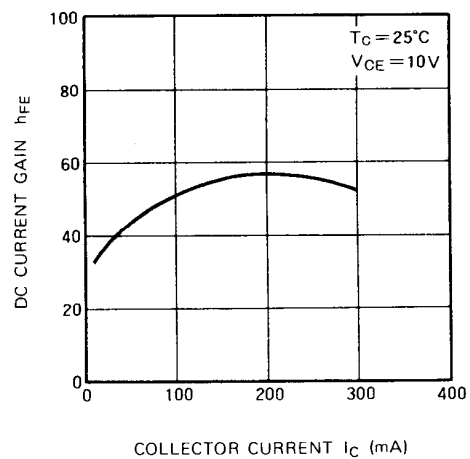
**THERMAL RESISTANCE 75°C
HEAT SINK DRAWING**



COLLECTOR CURRENT VS. COLLECTOR TO EMITTER VOLTAGE

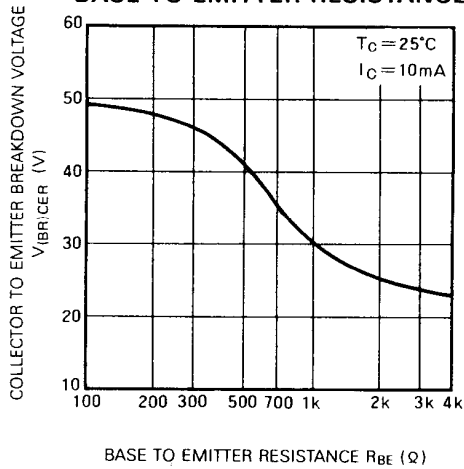


DC CURRENT GAIN VS. COLLECTOR CURRENT

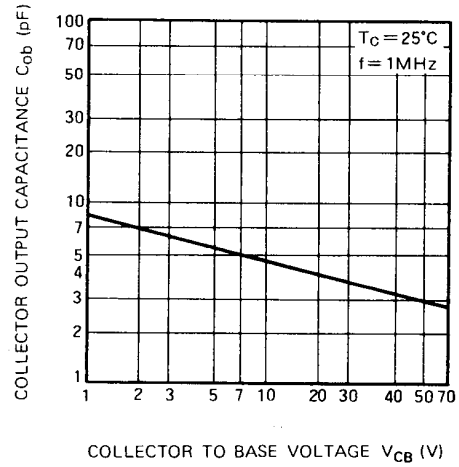


NPN EPITAXIAL PLANAR TYPE

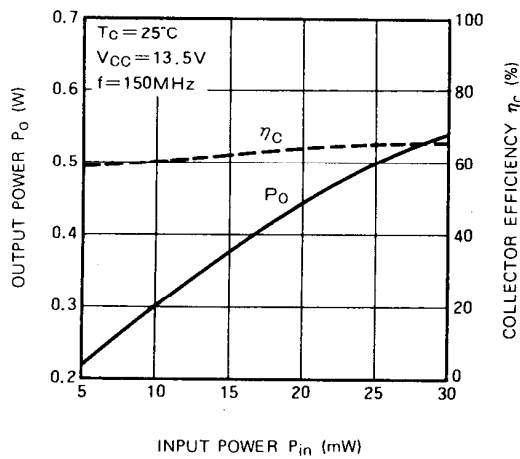
**COLLECTOR TO EMITTER BREAKDOWN
VOLTAGE VS.
BASE TO EMITTER RESISTANCE**



**COLLECTOR OUTPUT CAPACITANCE VS.
COLLECTOR TO BASE VOLTAGE**



**OUTPUT POWER,
COLLECTOR EFFICIENCY
VS. INPUT POWER**



**OUTPUT POWER VS.
COLLECTOR SUPPLY VOLTAGE**

