

bel/ defining a degree of excellence

DIGITAL DELAY LINE SERIES A447 FIXED DELAY

AVAILABLE IN FAST LOGIC
REQUEST A427 SERIES

TECHNICAL INFORMATION

TEST CONDITIONS

Pulse Voltage 3.2 Volts
Rise Time 3.0 Nsec (10%-90%)
Pulse Width $1.2 \times$ Total Delay
Pulse Period $4 \times$ Pulse Width
Supply Current, I_{CC} 60.0 Milliamps
typical
Supply Voltage, V_{CC} 5.0 Volts
Ambient Temperature 25°C

PERFORMANCE CHARACTERISTICS

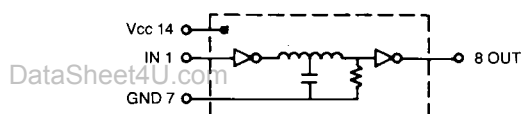
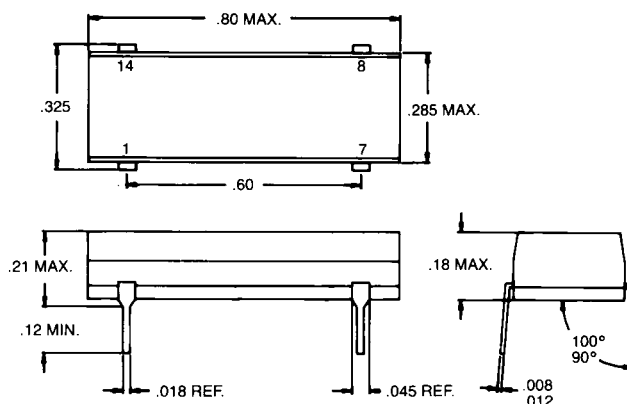
Delay Tolerance From Input To Tap
 ± 2 Nsec or 5% whichever is greater
Performance Characteristics apply at
above listed Test Conditions.

ELECTRICAL CHARACTERISTICS

Supply Voltage, V_{CC}
4.75 to 5.25 Volts
Logic 1 Input Current
50 Microamp max.
Logic 0 Input Current
- 2 Milliamp max.
Logic 1 Output Voltage
2.7 Volts min.
Logic 0 Output Voltage
0.5 Volts max.
Operating Temperature Range
0°C To 70°C
Temperature Coefficient Of Total Delay
500PPM/°C Typical
Minimum Input Pulse Width
40% Of Total Delay
Maximum Duty Cycle
50%

DRIVE CAPABILITIES

10 TTL Loads/Unit max.
—Compatible with TTL and DTL circuits.
—Other delays and tolerances upon
request



Part Number	Delay/Tap 1, 3	Rise Time 2, 3
A447-0010-06	10NS	4NS
A447-0020-06	20NS	4NS
A447-0030-06	30NS	4NS
A447-0040-06	40NS	4NS
A447-0050-06	50NS	4NS
A447-0060-06	60NS	4NS
A447-0070-06	70NS	4NS
A447-0080-06	80NS	4NS
A447-0090-06	90NS	4NS
A447-0100-06	100NS	4NS
A447-0125-06	125NS	4NS
A447-0150-06	150NS	4NS
A447-0175-06	175NS	4NS
A447-0200-06	200NS	4NS
A447-0250-06	250NS	4NS
A447-0300-06	300NS	4NS
A447-0350-06	350NS	4NS
A447-0400-06	400NS	4NS
A447-0450-06	450NS	5NS
A447-0500-06	500NS	5NS

1 Delays measured at 1.5 Volts level on Leading and Trailing Edge.
2 Rise Times measured from .75 Volts to 2.4 Volts.
3 Measured with no loads on taps.

Specifications Subject To Change Without Notice

www.DataSheet4U.com